



ROTAMETER

Metal Tube (Magnetic)

Variable Area Flowmeter

OPERATING PRINCIPLE

Metal Tube Rotameter is basically a variable area flowmeter. The differential pressure across the annulus area is constant and the Flowrate is measured as a function of the position of annulus area created by float position. The position of the float is sensed by a magnet and indicated On the dial in terms of flow rate.

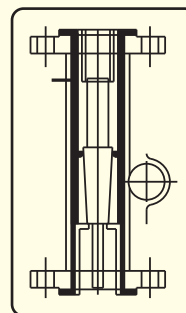


STANDARD FEATURES

- * Two Tone Powder Coated Excellent Finish
- * Heavy Duty Design With Maximum Visibility
- * Single Piece (Jointless) PTFE / PP Claded Body
- * Flow Range Between 25 To 63000 LPH
- * No Threads In Body, Avoids Corrosion
- * Face To Face Distance : 250 mm.
- * Various Material Of Construction
- * Accuracy : +/- 2% Of Full Scale
- * Line Size From 15 NB To 100 NB
- * Suitable For In-Line Installation
- * Measuring Span - 1:10
- * Magnet :- Alnico
- * Easy To Maintain
- * Angular Scale

Measuring Range in LPH of H₂O @ T :- Ambt/Pr : - Atm

NB	Model No	With PTFE float LPH	With SS 316 Float LPH	Max Pres Drop MMWC	Test Press kg/cm ²
15	TM-1	-	2.5-25	1000	20
	TM-2	2.5-25	4-40		
	TM-3	4-40	6.5-65		
	TM-4	6.5-65	10-100		
	TM-5	10-100	16-160		
	TM-6	16-160	25-250		
	TM-7	25-250	40-400		
	TM-8	40-400	63-630		
25	TM-9	63-630	100-1000	1000	20
	TM-10	100-1000	160-1600		
	TM-11	160-1600	250-2500		
	TM-12	250-2500	400-4000		
50	TM-13	400-4000	630-6300	1200	20
	TM-14	630-6300	1000-10000		
	TM-15	1000-10000	1600-16000		
80	TM-16	1600-16000	2500-25000	1500	20
	TM-17	2500-25000	4000-40000		
100	TM-18	4000-40000	6300-63000	1500	20



PTFE/PP - single pc (no joint) clading
100% spark proof

DATA REQUIRED FOR OFFER

- 1) Tag No.
- 2) MOC Of Wetted Parts
- 3) Type Of Connection
- 4) Flang Size / Rating
- 5) Fluid / State
- 6) Operating Conditions
 - A) Fluid Density / SPGR
 - B) Pressure
 - C) Temperature
 - D) Viscosity.
- 10) Measuring Range



Tansa Equipments Pvt. Ltd.

Unit No. 35/36/41, Om Anand Industrial estate, M. S. Road, Raghunath Nagar, Thane - 400604 (Maharashtra) India.
 Tel. : 2583 2323 , 65720669 Fax : 2582 3708,
 E-mail : tansaindia@gmail.com / tansa@mtnl.net.in / sales@tansa.co.in
 Website : www.tansa.co.in, www.rotameters.co.in, www.orificeplate.in, www.flowmetersindia.com

We also manufacture Glass Tube, Purge type, Acrylic body, by - Pass Rotameters & Orifice Assy.

● Due to continuous development specifications are subject to change without prior notice.

CAT No. - MTR 1-010412





ROTAMETER

Metal Tube (Magnetic)

Variable Area Flowmeter

OPTIONAL

1) Metal Tube Rotameter with Transmitter



FEATURES

Zero Cut-off - 1%, 2%, 5%, 10% – Programmable.

Accuracy - +/- 2 % of Full Scale for Flow Rate as well as Totalization.
from 10% to 100% Input

PC Communication

[Optional] - Type RS232 or RS485
Protocol MODBUS RTU

Baud rate - 19200 / 9600 / 4800 / 2400 – Programmable.

Parity - Even / None – Programmable.

INTRODUCTION

The Metal Tube Rotameter Transmitter is a micro-controller based flow meter having 16 x 2 LCD display digital indications for instantaneous flow rate and Totalized flow. 1st row show the instantaneous flow rate and 2nd row show totalized flow. Unit offers facilities for accurate flow totalisation. Units are programmable and visible on LCD display.

The user can set various parameters through a front panel with easy to operate keypad. These parameters remain in the memory even if there is a power failure. Each of the modes in which the instrument can be programmed to operate are PASSWORD protected.

GENERAL SPECIFICATIONS

Mounting - Integral with Rotameter

Enclosure - Al Die cast.

Power Supply - For Integral – 24 Vdc ± 10%, 4.8VA

For Remote – 85 to 265 V ac single phase 50Hz

Model Number - MRT - L (METAL TUBE ROTAMETER with 16 x 2 LCD Display)

MRT-D (METAL TUBE ROTAMETER with 7 Segment LED Displays)

MRT-D-Remote.

INPUT / OUTPUT SPECIFICATIONS

Input - Angular displacement of fork with respect to flow

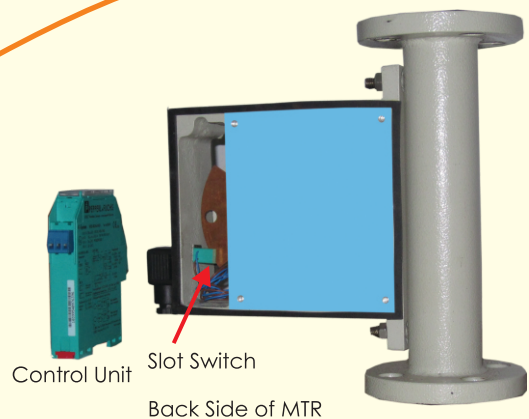
Standard Output - 4 – 20 mA dc in max. 600 load, Isolated. Proportional to Flow Rate.

Optional Output - PC communication OR Pulse Output (1 to 120000 pulses per hour)

2) Metal Tube Rotameter with Flow Switch (Namur)

Slot switch (namur)

model no	SJ5 - N
Mounting	Mounting on Magnetic Rotameter (Factory Mounted)
Slot distance	5mm
Supply voltage	8 vdc (through isoiation amplifier)
Out put	Namur 2 wire.
Switch setting	At any point over the range



With Flow Switch :

Control unit for above switch

1. Model no	WE77-EX 1/2 for namur switches
2. Type	Switching amplifier for namur switch
3. Mounting	Din rail
4. Input	110/230v ac (-15% + 10%)
5. Out put	1 c/o relay contact out put @2 a.
6. Input pulse	By an namur proximity switch



Tansa Equipments Pvt. Ltd.

Unit No. 35/36/41, Om Anand Industrial estate, M. S. Road, Raghunath Nagar, Thane - 400604 (Maharashtra) India.

Tel. : 2583 2323 , 65720669 Fax : 2582 3708,

E-mail : tansaindia@gmail.com / tansa@mtnl.net.in / sales@tansa.co.in

Website : www.tansa.co.in, www.rotameters.co.in, www.orificeplate.in, www.flowmetersindia.com



We also manufacture Glass Tube, Purge type ,Acrylic body, by - Pass Rotameters & Orifice Assy.

● Due to continuous development specifications are subject to change without prior notice.

CAT No. - MTR 1-010412